

EViews Excel Add In

WHITEPAPER AS OF 2/14/2013

The new EViews Excel Add In provides an easy way to import and link EViews data with an Excel spreadsheet. It does this through the use of our new EViews OLEDB driver that provides read-only access to EViews data stored in workfiles and database files.

Note: Only series and vector/matrix/scalar/string objects can be retrieved using this Add In.

Installation

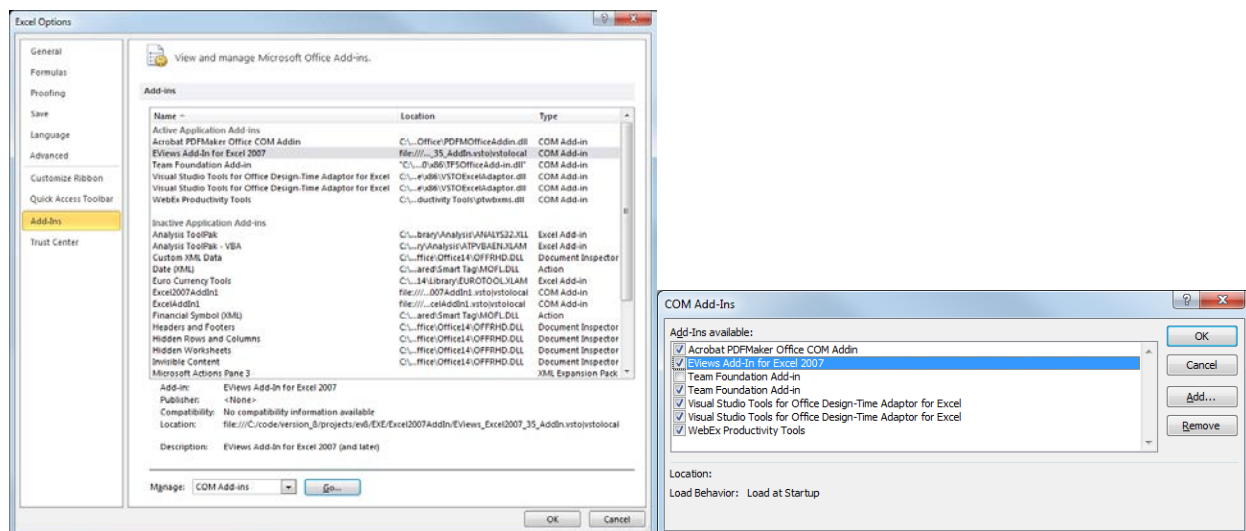
The EViews Excel Add In is a separate installation option during the EViews setup procedure. The Add In requires EViews to be installed with a valid serial number. Before using this Add In with Excel, please verify that you can run EViews itself successfully on the same machine. If you already have EViews installed, re-run the EViews setup and just select the "EViews Excel Add In" option to install.

The Add In can also be manually installed by copying the "EViews Add In.xla" file to your Microsoft Office AddIns folder. Please refer to Microsoft Office help to find the location of your local AddIns folder.

Activation

Once installed, you'll need to activate the Add In from within Microsoft Excel. Here's an example of activation using Microsoft Excel 2010:

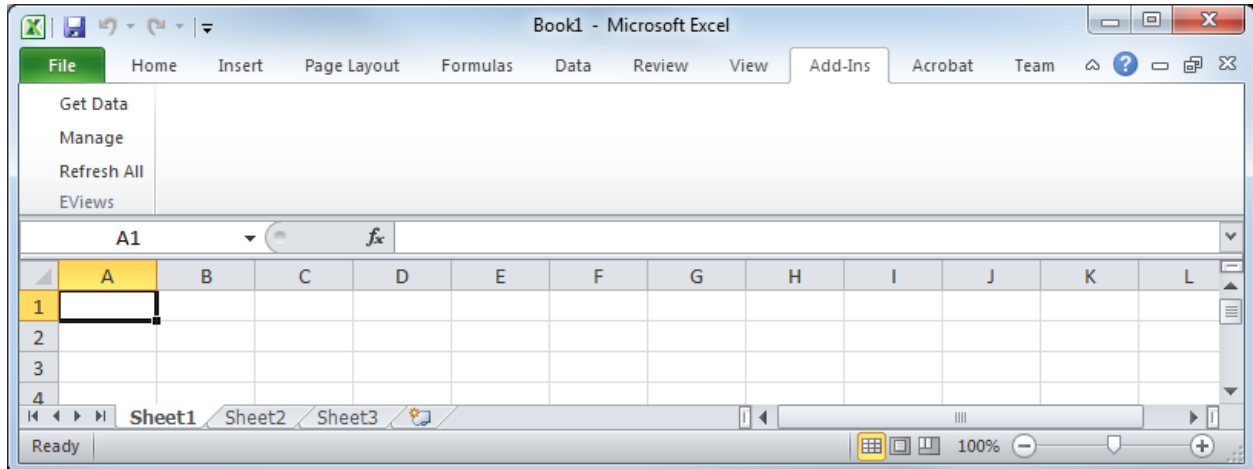
After starting Microsoft Excel 2010, click the "File" tab (located in the upper left of the window) and select "Options". This will bring up the Excel Options popup.



Select "Add Ins" in the left list, and then in the Manage dropdown, select "COM Add-ins" and then click

the "Go..." button. This should take you to the Add-Ins popup. In this window, you should see "EViews Add In for Excel 2007" as an available Add In. Check the checkbox next to it and click OK.

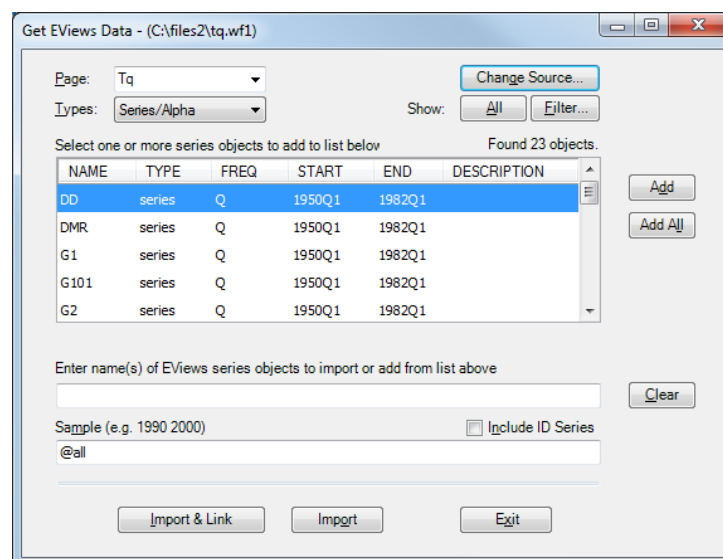
Once activated, you should see the "Add-Ins" ribbon at the end of the ribbon tabs:



On that ribbon, you will find the EViews Add In menu.

Retrieving EViews Data

To begin the data import process, click on "Get Data". This will open up a file browser popup which allows you to select an EViews workfile or database file. Once selected, click Open to go the Get EViews Data popup:



This popup displays all available objects in the selected workfile. If a database file was selected, click on "All" or "Filter..." to list the available objects in the database.

Retrieving Data from an EViews Workfile (WF1)

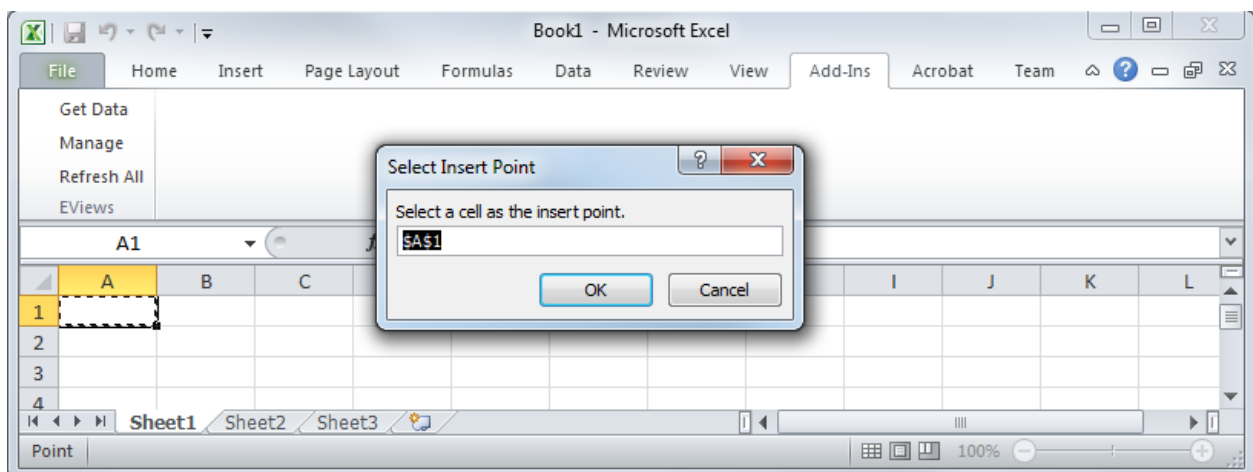
If the source is a workfile, the Page dropdown will display all available pages. All available Series/Alpha objects on the first page are listed automatically. (To filter which objects are listed in this table see "Filtering Objects" below.)

The first row in the table shows the column headers. Each row after that represents a readable object. Note: only series (including alpha), vectors, and matrices (including symmetric matrices) can be retrieved.

To list any available vectors/matrices, select "Vector/Matrix" from the Types dropdown. Vectors and matrix objects cannot be read in more than one at a time. Series objects may be grouped together into a single read operation.

Selecting a row and then clicking "Add" (or simply double-clicking the row) will move the object name into the "Objects to Import" textbox. This textbox must be a space delimited listing of the selected objects to retrieve such as: "x y z".

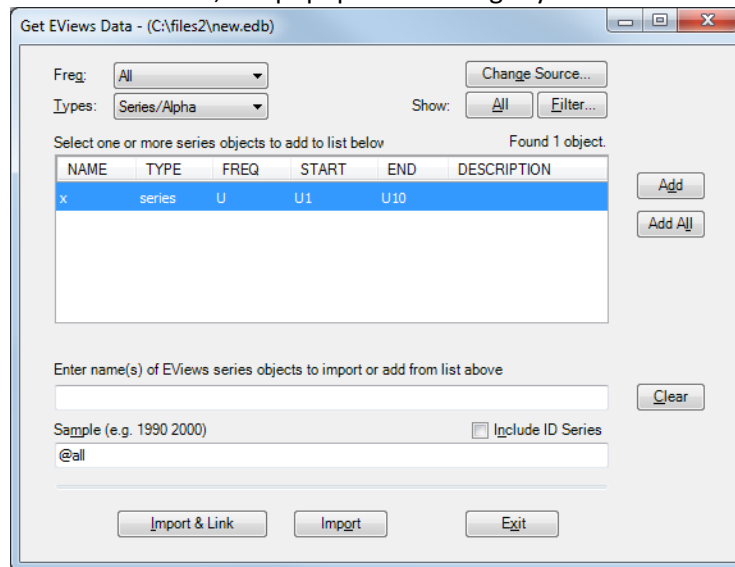
Once selected, you can click on "Import" or "Import & Link" to import the data into the current spreadsheet. The Add In will ask you to specify an insertion point on a spreadsheet. You can either type in a cell value or click on a cell using your mouse:



Click OK to perform the import. For the differences between Import and Import & Link, see "Import vs. Import & Link" below.

Retrieving Data from an EViews Database File (EDB)

If the source is an EViews database file, the popup will look slightly different:

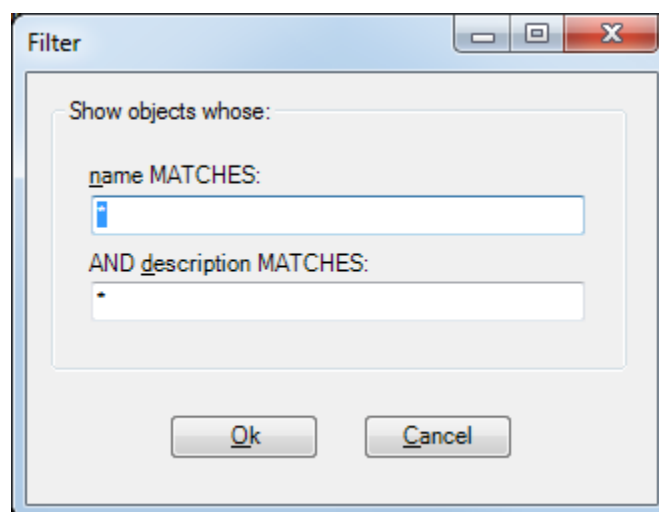


By default, when opening an EViews database file, its object list is not displayed (due to possible performance issues with database files that contain thousands of objects). Click the "All" button to display all objects. Or to filter to a specific list, click on "Filter..." (see "Filtering Objects" below).

The Freq dropdown will display all standard frequencies, plus any other unique ones found in the source file. When retrieving multiple series objects in a single read operation, each series object must have the same frequency so you can use this dropdown to only show those objects that match a specific frequency.

Filtering Objects

Some source files may include too many objects to display all at once in the table. To filter which objects are listed, you can alter the listing by clicking on "Filter" to go to the Filter popup:



Here you can specify a name pattern or description pattern so that only those objects whose names match the pattern are displayed

Import vs. Import & Link

Import performs a one-time import of the data into the spreadsheet. When you save the spreadsheet and re-open it at a later date, the EViews data will not be automatically be refreshed from the source file. This is useful if you want to keep a "snapshot" of the data at a certain point in time.

To keep data in sync, use Import & Link. This will instruct Excel to refresh the spreadsheet copy of the data every time the spreadsheet is opened.

Include ID Series

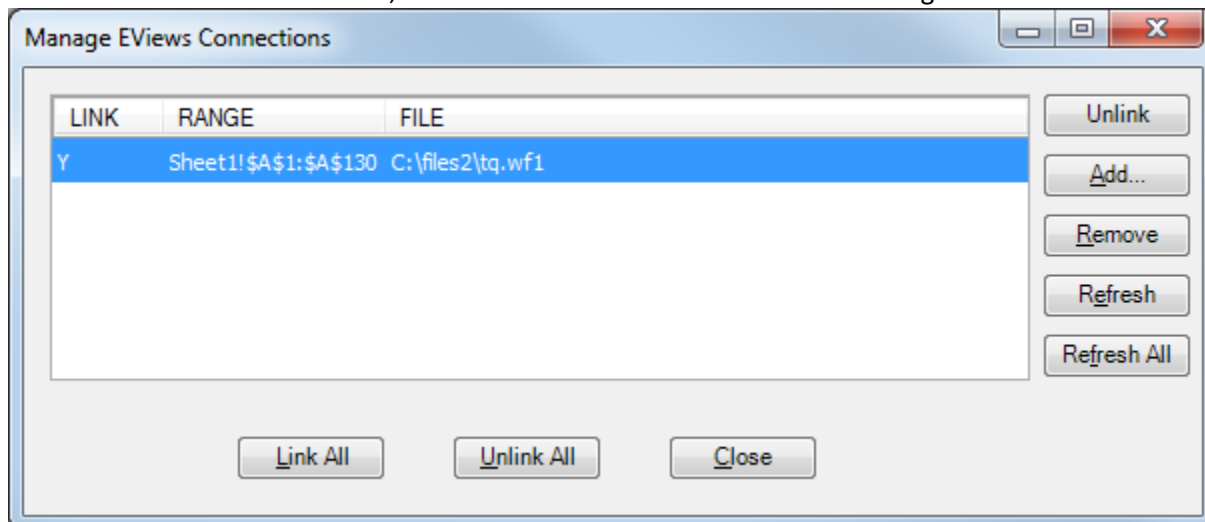
Used only when retrieving series/alpha objects, this option will automatically include the id series for the selected series objects (@DATE). You can also manually specify this column in a different location by typing in @DATE (or @ENDDATE for the end value of the date period) anywhere in the "Objects to Retrieve" textbox (e.g. "x y z @date @enddate").

Sample to Filter Observations

Used only when retrieving series/alpha objects, this option allows you to specify a date range to retrieve. For example, "1995 2000" will retrieve only those observations that fall with the years 1995 and 2000. The default value is @all which returns all available observations.

Managing EViews Connections

For convenience, we have also provided a way to list all the current EViews connections in the current Excel worksheet. To see this list, click on the EViews menu and select "Manage".



This popup displays all EViews connections in the current worksheet. Each row in the listbox is a separate connection that displays the Link status (Y means Linked), the Range used in the worksheet,

and the Source File. Selecting the row will result in Excel highlighting the region in the worksheet that is used by that connection.

From here, you can Link or Unlink the connection (a Linked connection means the data is automatically refreshed from the source each time this workbook is opened by Excel), add a new connection (via Add...), remove a connection (and optionally clear the data), and/or Refresh the data.

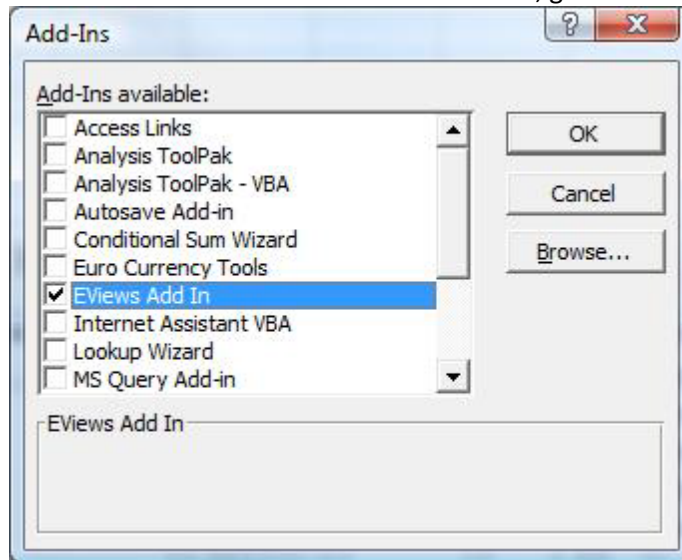
Refresh All

To manually refresh all EViews connections in the current worksheet, whether linked or not, click on the EViews menu and select "Refresh All". This will attempt to re-retrieve all EViews data.

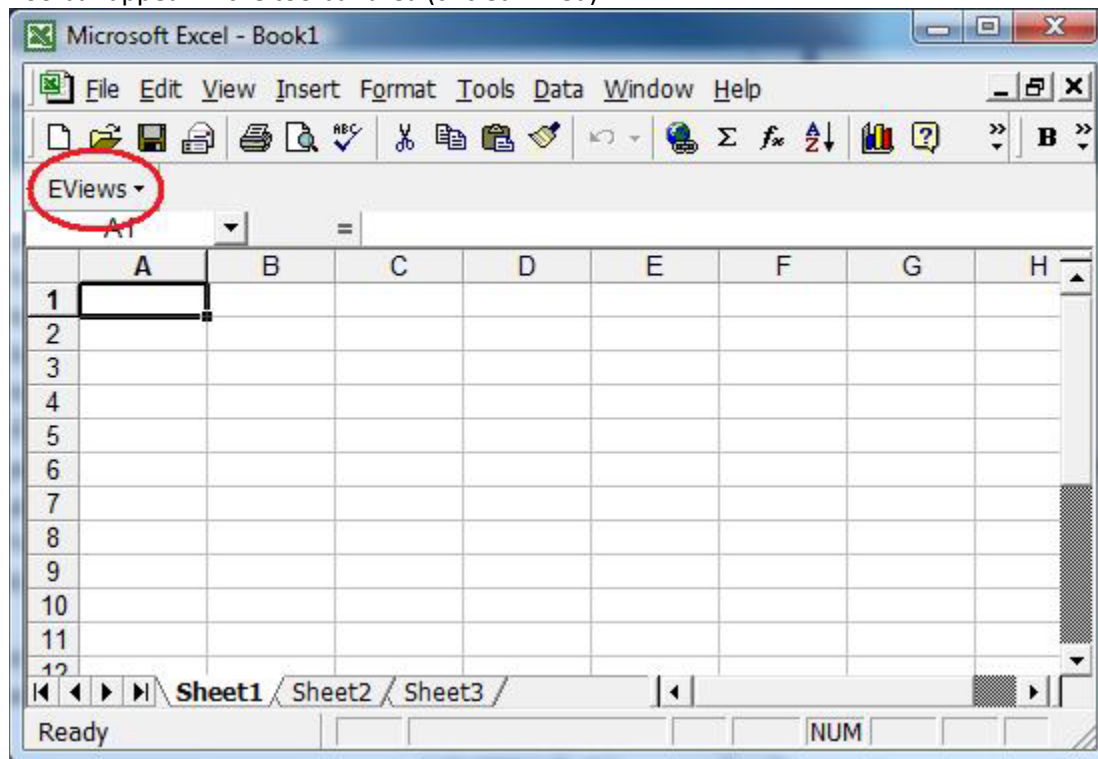
Appendix A

Activation on Excel 2000

To activate the EViews Add-In on Excel 2000, go to the Tools menu and select "Add-Ins...":

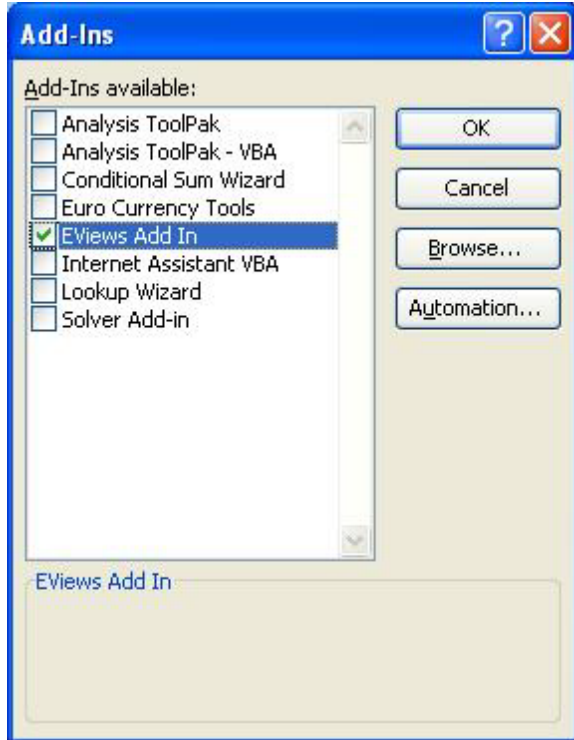


Check the checkbox next to "EViews Add In" and click OK. Once activated, you should see the EViews Toolbar appear in the toolbar area (circled in red):



Activation on Excel 2003

To activate the EViews Add-In on Excel 2003, go to the Tools menu and select "Add-Ins...":



Check the checkbox next to "EViews Add In" and click OK. Once activated, you should see the EViews Toolbar appear in the toolbar area (circled in red):

